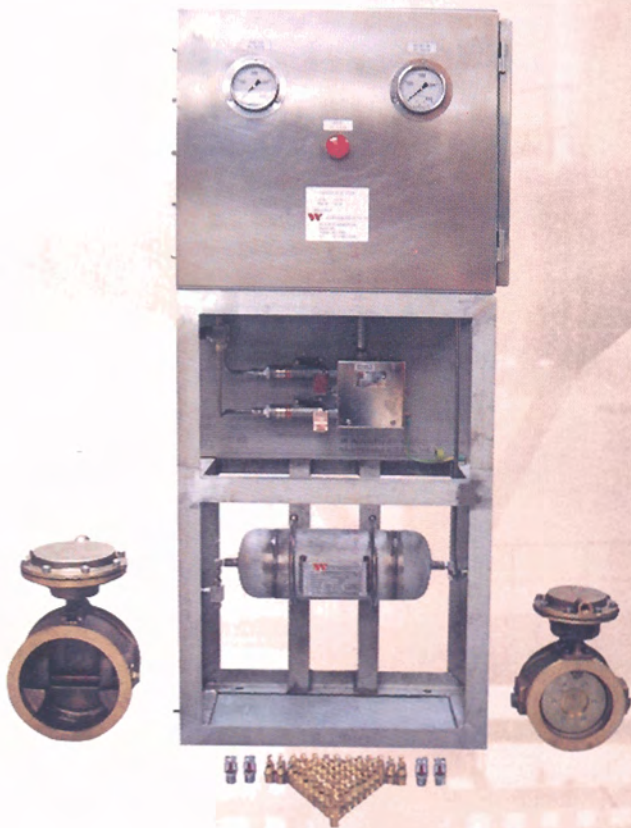


DELUGE 2000™

GREAT MANY LIVES-DEPEND ON DELUGE 2000™.

From the oil fires in Kuwait, to LPG tank farm in Saudi, to drilling platforms in the South China Sea, Deluge 2000™ meets the rigorous demands of fire protection around the world.



Deluge 2000™ Firewater Deluge Control Panel is modular design to allow operations of the system by a signal from any of the followings;

- a) Fire & Gas Panel (WFGP) in Master Control Room (MCR Auto or Manual)
- b) Pneumatic Detection Devices (Fusible Plugs)
- c) Manual Fire stations
- d) Signal operation of the solenoid valves.
- e) Manual operation of the emergency pull-to-bleed valves.

As in Figure 1, the deluge system pipework is uncharged and open at the nozzles. The deluge valve is held closed by a pneumatic latching mechanism. With a signal received, a depressurisation of instrument air occur. This action reduces pressure on the alarm valve clack to effect Fire-water deluge to the Fire protection nozzles.

The control panel is constructed of 316L stainless steel in its entirety and is rated for IP 56. Internal tubings are of 317L stainless steel material with instruments of 316 S.S. material. System is easily mobilise for installation on site.

SPECIFICATION

| | |
|--------------|---------------------|
| MODEL | DELUGE 2000™ |
|--------------|---------------------|

| | |
|---------------------|--|
| TYPE | FIREWATER DELUGE CONTROL PANEL |
| MATERIAL | 316L STAINLESS STEEL |
| THICKNESS | 3 MM |
| PRESSURE (MAX) | 200 PSI |
| PRESSURE (NORMAL) : | 80 PSI |
| PRESSURE VESSEL | 6 LITRES ASME CODE STAINLESS STEEL TANK RATED AT 250 PSI. |
| ENCLOSURE CLASS | IP 56 |
| TEMPERATURE CLASS : | T3 |
| CLASSIFICATION | CLASS 1, DIV 1, GROUP C & D |
| WEIGHT (NET) | 210 KG |
| DIMENSION | 700 MM X 400 MM X 1600 MM |

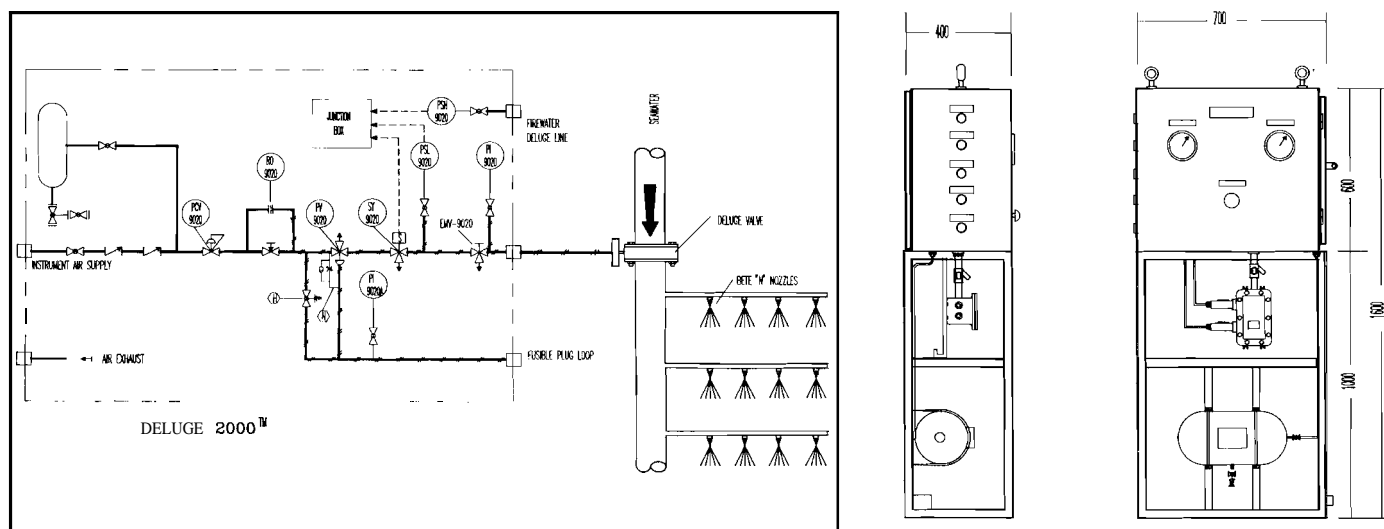


FIGURE 1

Head Office (Manufacturer)

W Wilson Engineering (S) Pte Ltd
 34, #02-22 Commonwealth Lane,
 Singapore 0314.
 Fax: 777 9813 / 776 1323
 Tel: 774 1828 (Main Line)

