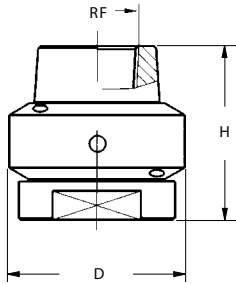


## ROTARY WASHING NOZZLES

The washing is obtained through water jets coming from a rotating head, where the head motion is assured purely by the fluid reaction forces. The rotation speed depends upon the operating pressure, which must be limited to avoid the water jets being broken into minute droplets.

### REACTION DRIVE



### UBB

UBB heads are specially designed for applications where chemical attacks from strong acids are to be expected, or when contamination to the product being handled is to be excluded, and are therefore entirely made out of PTFE.

Their rotary motion is derived from the reaction forces of their water jets, which are arranged in such a way that the inner tank surface is thoroughly covered.

The simple design, a two-piece construction, assures for long, maintenance free service.

Four different capacities make for a range to suite many different applications.

Also available with American NPT thread connection.

Material E1 PTFE

Code	RF	Flow values (lpm) at different pressures (bar)				Dimensions	
		2	3	5	7	H	D
UBB 2319 E1	1/2"	26	32	-	-	60	60
UBB 2320 E1	3/4"	26	32	-	-	60	60
UBB 3120 E1	3/4"	105	120	176	214	60	60
UBB 3198 E1	1"	158	198	274	322	64	70

### UBE

UBE rotary heads offer the same design as the UBD series, and therefore the same advantages like simplicity of design, easyness of cleaning and superior performance.

In addition, they are completely made out of pure Teflon, which assures an outstanding resistance to chemically aggressive media.

UBE heads are hence the most suitable devices to be used for tank cleaning in those applications where aggressive chemicals like strong acids are being handled.

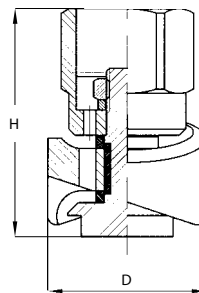
They are available in three sizes, and a choice of different spray patterns (on request).

The table below shows liquid capacities for the different heads at several feed pressure values, and allows for complete coding identification for all the available sizes and types.

Material E1 PTFE (Teflon)

Teflon is a registered trade mark from Dupont Co.

### REACTION DRIVE

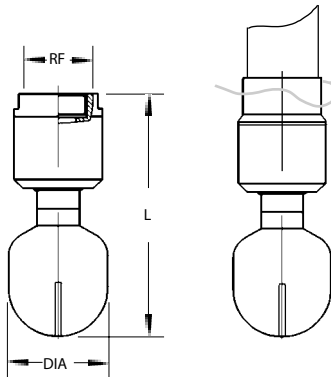


Code	RF	PM	Flow values (lpm) at different pressures (bar)				Dimensions (mm)	
			1	2	3	4	H	D
UBE A087 E1 AF	3/4"	4,0	55	73	87	100	55	38
UBE A125 E1 AF	1	5,0	80	98	128	148	75	52
UBE A210 E1 AF	1 1/2"	7,0	130	168	210	242	105	68

# UBC/ UBF

## TANK WASHING Nozzles

### UBC



UBC type rotary tank washer nozzles contain slotted, flat-shaped spray orifices positioned such that the jets provide the reaction forces to produce the rotary motion. This simple yet robust design, utilizing two ball bearing assemblies, makes it possible to operate the nozzle in any orientation, giving an efficient 360° of coverage.

The largest UBC nozzle can accommodate tanks up to 15 feet in diameter for deep washing and 20 feet for rinsing. All of the other nozzles listed in the table have a washing range of 10 feet and a rinsing range of 14 feet.

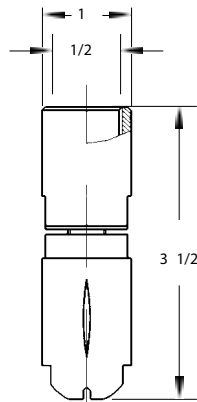
The body, bearings and races are all fabricated from 316 stainless steel. The UBC series is supplied either with a standard threaded female pipe connection or, for applications where frequent cleaning is required, a slip-on fitting with a safety locking pin. To order the slip-on fitting add the letter 'C' to the nozzle code shown in the table.

Nozzle code	RF	Flow rates (gpm) at various pressures (psi)				Angle AA	Max. Throw MT	Weight W	Dimensions	
		30	45	75	105				L	DIA
UBC 2899 B3x	1/2"	19	24	31	43	360	80"	0.66	41/2"	13/4"
UBC 2900 B3x	3/4"	19	24	31	43	360	80"	0.66	41/2"	13/4"
UBC 3120 B3x	1"	26	32	41	48	360	80"	1.3	41/2"	13/4"
UBC 3300 B3x	1 1/4"	65	79	103	121	360	80"	1.5	5"	23/8"

Connection: Female thread  
Slip-on fitting (add 'C' to nozzle code)

Materials: All 316 stainless steel

### UBF



UBF type rotary tank washer nozzles contain all the features of the UBC series, but are designed to operate in smaller size tanks that contain relatively limited size openings such as found in pressurized soft-drink containers and beer kegs.

The spray coverage from type UBF nozzles is 270°. The body, bearings and races are all fabricated from 316 stainless steel.

Connection: Female thread

Materials: All 316 stainless steel

Nozzle code	Flow rates (gpm) at various pressures (psi)					Angle AA	Max. Throw MT	Weight W
	15	45	75	150	180			
UBF 2270 B3	4	7	10	14	15	270	60"	0.5
UBF 2380 B3	6	10	13	18	20	270	60"	0.5