

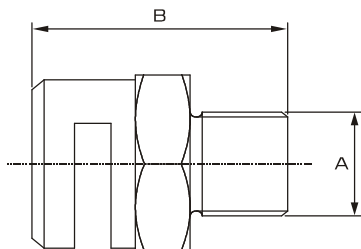
WC series

WATER CURTAIN Nozzles



MODEL	WC-15 & WC-20 in Brass IS319 / ASTM B16
	WC-15S & WC-20S in 316 stainless steel construction
MAXIMUM WORKING PRESSURE	12.3 Kg./Sq.cm. (175 PSI)
EFFECTIVE WORKING PRESSURE	1.4 TO 3.5 Kg /Sq.cm. (20 TO 50 PSI)
END CONNECTION	WC-15 & WC-15S with 1/2" BSPT (NPT optional)
	WC-20 & WC-20S with 3/4" BSPT (NPT optional)
K- FACTOR	Model : WC-15 / WC-15S K23, K30, K37, K45, K53 & K72
	Model : WC-20 / WC-20S K98, K120, K140
APPROXIMATE WEIGHT	Model WC-15 - 0.180 Kg. Model WC-20 - 0.250 Kg.
FINISH	Nickel chrome or Brass finish for WC-15 & WC-20
	Natural finish for WC-15S & WC-20S as base 316 stainless steel
ORDERING INFORMATION	Please specify Model, K factor and Finish.

DIMENSION in millimetre (Approximate)



MODEL	A	B
WC-15 & WC-15S	1/2" BSPT or (M)NPT	42
WC-20 & WC-20S	3/4" BSPT or (M) NPT	46



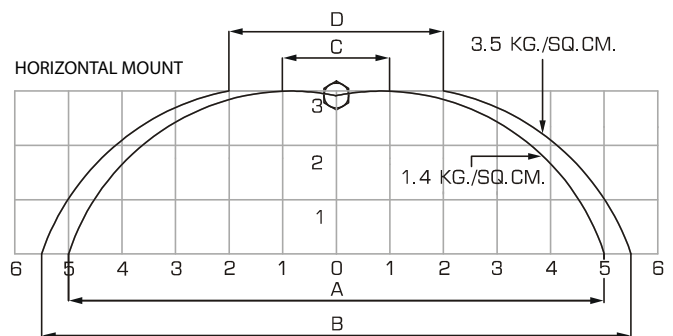
Water Curtain Nozzle distributes water in a flat curtain extending all the way to the ground.

Water Curtain Nozzle when mounted in pendent position acts as a window spray nozzle to protect interior walls, windows and other opening of the building which are affected by fire.

The nozzles when mounted in horizontal position with flow towards ground, a flat water curtain is produced to segregate the area which is under fire.

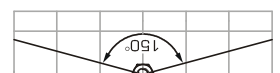
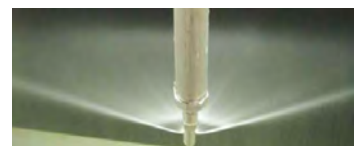
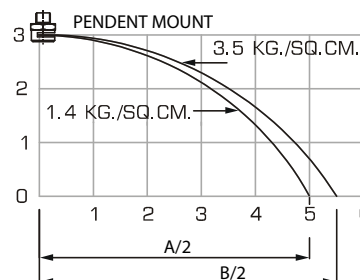
Water Curtain Nozzles are available in Brass and Stainless Steel construction with different flow rate.

SPRAY TRAJECTORY @ 3.5 bar



DIMENSION in meters (Approximate)

	K23	K30	K37	K45	K53	K72	K98	K120	K140
A	10.0	10.0	11.0	11.0	12.2	13.8	14.0	14.4	14.6
B	11.0	11.0	12.0	12.0	13.3	14.2	14.4	15.0	15.1
C	01.8	01.8	02.2	02.2	03.3	04.4	04.2	04.4	04.5
D	02.2	02.2	02.4	02.4	03.6	04.8	05.2	05.4	05.5





WC series

Water Curtain Spray Nozzles

DESIGN FEATURES

- One-piece construction
- No internal parts
- Sizes for all applications
- Male connection

SPRAY CHARACTERISTICS

- High impact
- Uniform distribution with tapered edges for overlapping sprays

Spray pattern: 150 degrees Fan



Flow Characteristics

Flow and Pressure Flow Chart											
Male Pipe Size	Nozzle Number	K Factor	LITERS PER MINUTE @ B AR								Orifice Dia.(mm)
			0.5 bar	0.7 bar	1 bar	2 bar	3 bar	5 bar	10 bar	30 bar	
1/2	WC-15	20.0	14.5	17.2	20.5	29.0	35.5	45.9	64.9	112.0	5.95
		30.0	21.5	25.2	30.0	42.0	51.9	45.9	66.9	164.0	6.97
		37.0	26.5	30.2	37.0	52.3	64.9	82.7	117.0	202.6	7.52
		42.0	29.7	35.1	42.0	59.3	72.7	93.9	132.8	230.0	8.35
		58.0	41.0	48.5	58.0	82.0	100.4	129.7	183.4	317.7	9.42
		79.0	55.9	66.1	79.0	111.7	136.4	176.6	249.9	432.7	11.0
3/4	WC-20	98.0	64.5	79.9	98.0	129.0	158.0	204.0	288.0	499.0	13.2
		120.0	85.0	100.0	120.0	170.0	207.8	268.3	379.4	657.3	15.6
		140.0	98.9	117.0	140.0	197.9	242.5	313.3	442.4	766.3	17.6



Standard Materials: Brass and 316 Stainless Steel