



WILTEX 240°

HORIZONTAL FLAT FAN

WILTEX 240 FLAT spray nozzle has an external deflector, which discharges water in a flat circular shaped pattern of small droplet size. The water is uniformly distributed over the surface to be protected.

The nozzle is used in water screening application

The minimum desirable pressure to achieve a reasonable spray pattern is 1.4 Kg./Sq.cm. The water distribution pattern as shown in the graph in following pages is at an average pressure of 5.0 Kg/Sq.cm. The change in pressure between 1.4 to 3.5 Kg./sq.cm does not affect much change in spray angle. The spray pattern should be in laboratory conditions. Outdoor performance is largely dependent on wind seep, its velocity and direction including field obstruction.



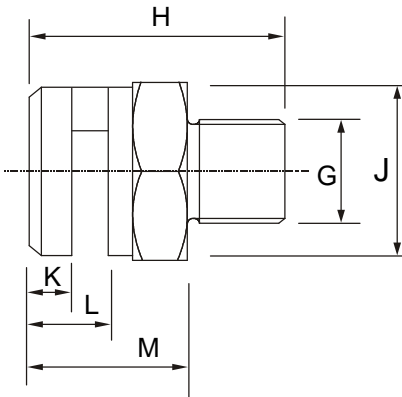
WILTEX 240 FLAT

SPECIFICATIONS

Size : 1/2" (M)NPT or BSPT
 Spray : 240 Flat Fan
 Mat'l : Brass or 316 SS

DISCHARGE CHARACTERISTICS

Male Pipe Size	Nozzle Number	K Factor	LITERS PER MINUTE @ Bar						
			0.5 bar	0.7 bar	1 bar	2 bar	3 bar	5 bar	10 bar
1/2	K-23	23	16.1	19.1	22.8	32.2	39.5	51.0	72.1
	K-37	37	24.2	28.6	34.2	48.3	59.2	76.4	108
	K-55	55	39.0	46.0	55.0	77.8	95.3	122.9	173.9



G : 1/2 inch M(NPT) or BSPT

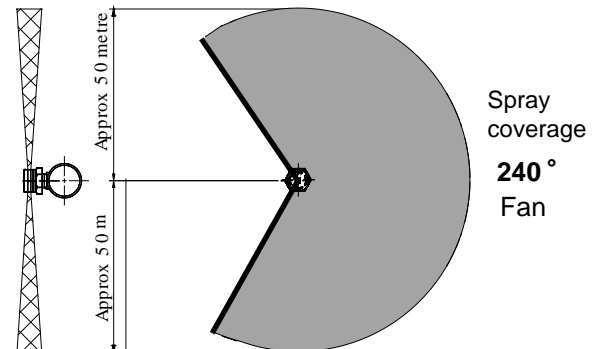
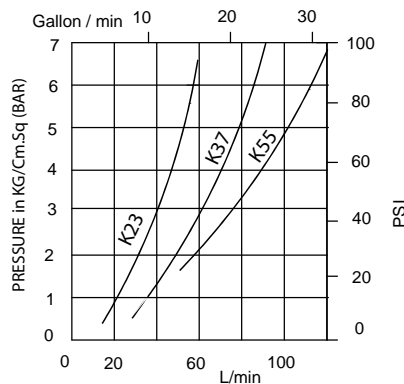
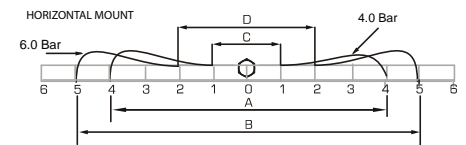
H	J	K	L	M
42	30	7	14	26

DIMENSIONS (mm)

Distance in Meters

Model	A	B	C	D
K-23	8.0	10.0	1.8	2.2
K-37	10.0	11.0	2.2	2.4
K-55	11.2	12.0	2.8	3.5

SPRAY TRAJECTORY @ 4.0 bar and 6.0 bar



Note : Dimension and design may change with actual product.