



Brass body with anti drip spring and ball assembly

AD series

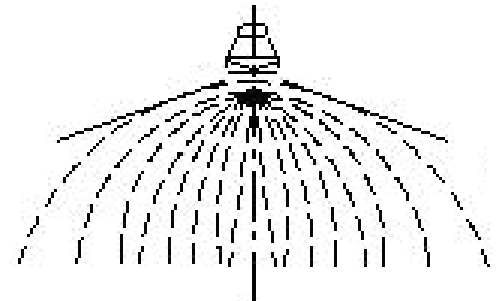
MISTING Nozzles

A Misting nozzle is a low cost atomising nozzle for evaporative cooling and dust suppression applications. Liquids passing through a small orifice under high pressure producing droplets range from 30 to 80 microns. Complete with anti drip spring / ball assembly including internal filter.

AD Flow rate					
MODEL NO	ORIFICE (mm)	FLOW-RATE (Litre per min)	PRESSURE (Bar)	CONN (UCN)	MAT'L
AD15	0.15	0.046	70	10/24	BRASS
AD20	0.20	0.089	70	10/24	
AD30	0.30	0.145	70	10/24	
AD15T	0.15	0.046	70	10/32	STAINLESS STEEL
AD20T	0.20	0.089	70	10/32	
AD30T	0.30	0.145	70	10/32	

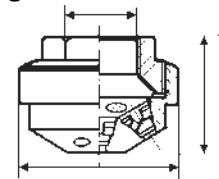
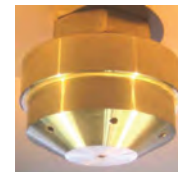
CLUSTER ATOMISING NOZZLE

CAY multiple full cone nozzle produces very fine droplets using only available water pressure. Their full cone spray pattern is a result of interaction of (7) seven hollow cone sprays generated through 2 mm orifice. The atomised droplet size is inversely proportional to pressure. With higher pressure of 10 bar, the droplets will discharge at faster exit velocity of the median size of 40 to 100 microns range.



130 degrees Full Cone Mist

Materials : 316 Stainless steel
 Connection : 1/2 inch (Female) NPT
 Spray angle : 130 degrees Full Cone



Spray Angle	Model	RF	D	D1	Liter / min @ Bar					mm		
					1.5 Bar	2.0	3.0	5.0	10	NR	DIA	H
130°	CAY 1153 B3	1/2	1.0	0.5	1.06	1.25	1.53	1.98	2.79	7	40	33.5
	CAY 1274 B3		1.8	0.5	1.94	2.24	2.74	3.54	5.00	7	40	33.5